

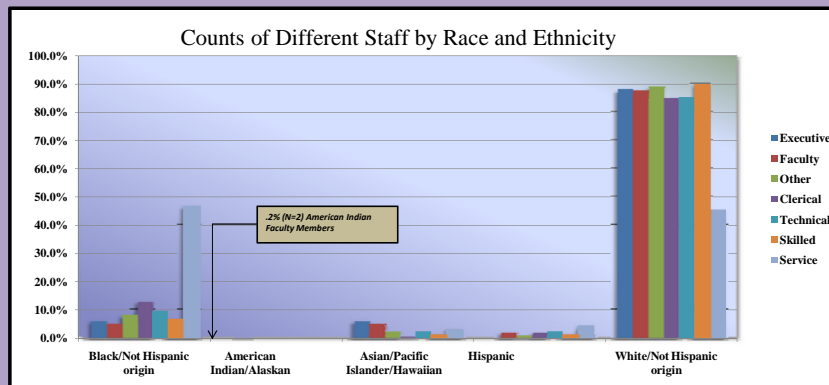
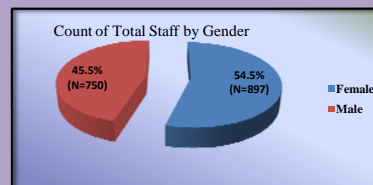
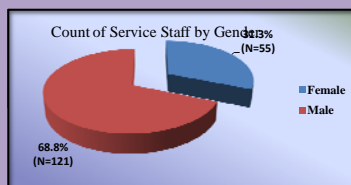
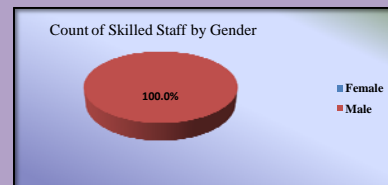
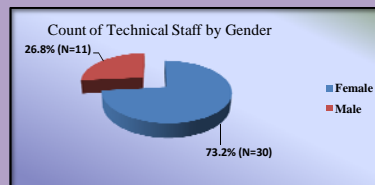
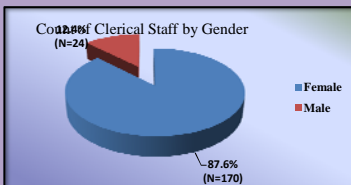
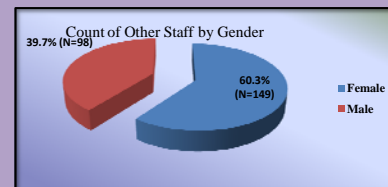
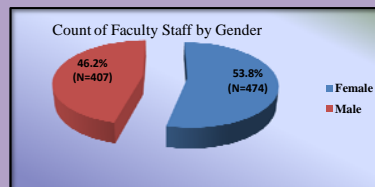
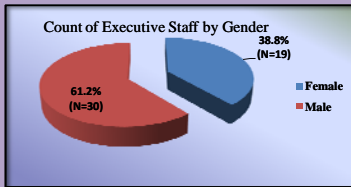
West Chester University's Staff Gender and Race/Ethnicity Totals Fall 2008



University Summary

Gender	H10		H20		H30		H40		H50		H60		H70		Total	
	Executive		Faculty		Other Prof.		Clerical		Technical		Skilled		Service			
	N	%	N	%	N	%	N	%	N	%	N	%	N	%	N	%
Female	19	38.8%	474	53.8%	149	60.3%	170	87.6%	30	73.2%	0	0.0%	55	31.3%	897	54.5%
Male	30	61.2%	407	46.2%	98	39.7%	24	12.4%	11	26.8%	59	100.0%	121	68.8%	750	45.5%
Total	49	100.0%	881	100.0%	247	100.0%	194	100.0%	41	100.0%	59	100.0%	176	100.0%	1647	100.0%

Race/Ethnicity	H10		H20		H30		H40		H50		H60		H70		Total	
	Executive		Faculty		Other Prof.		Clerical		Technical		Skilled		Service			
	N	%	N	%	N	%	N	%	N	%	N	%	N	%	N	%
Black/Not Hispanic origin	3	6.1%	44	5.0%	20	8.1%	25	12.9%	4	9.8%	4	6.8%	82	46.6%	182	11.1%
American Indian/Alaskan	0	0.0%	2	0.2%	0	0.0%	0	0.0%	0	0.0%	0	0.0%	0	0.0%	2	0.1%
Asian/Pacific Islander/Hawaiian	3	6.1%	43	4.9%	6	2.4%	1	0.5%	1	2.4%	1	1.7%	6	3.4%	61	3.7%
Hispanic	0	0.0%	19	2.2%	2	0.8%	4	2.1%	1	2.4%	1	1.7%	8	4.5%	35	2.1%
White/Not Hispanic origin	43	87.8%	773	87.7%	219	88.7%	164	84.5%	35	85.4%	53	89.8%	80	45.5%	1367	83.0%
Total	49	100.0%	881	100.0%	247	100.0%	194	100.0%	41	100.0%	59	100.0%	176	100.0%	1647	100.0%



EEO Category		University Total	
		N	%
H10	Executive	49	3.0%
H20	Faculty	881	53.5%
H30	Other	247	15.0%
H40	Clerical	194	11.8%
H50	Technical	41	2.5%
H60	Skill Crafts	59	3.6%
H70	Service	176	10.7%
Total		1647	100.0%