

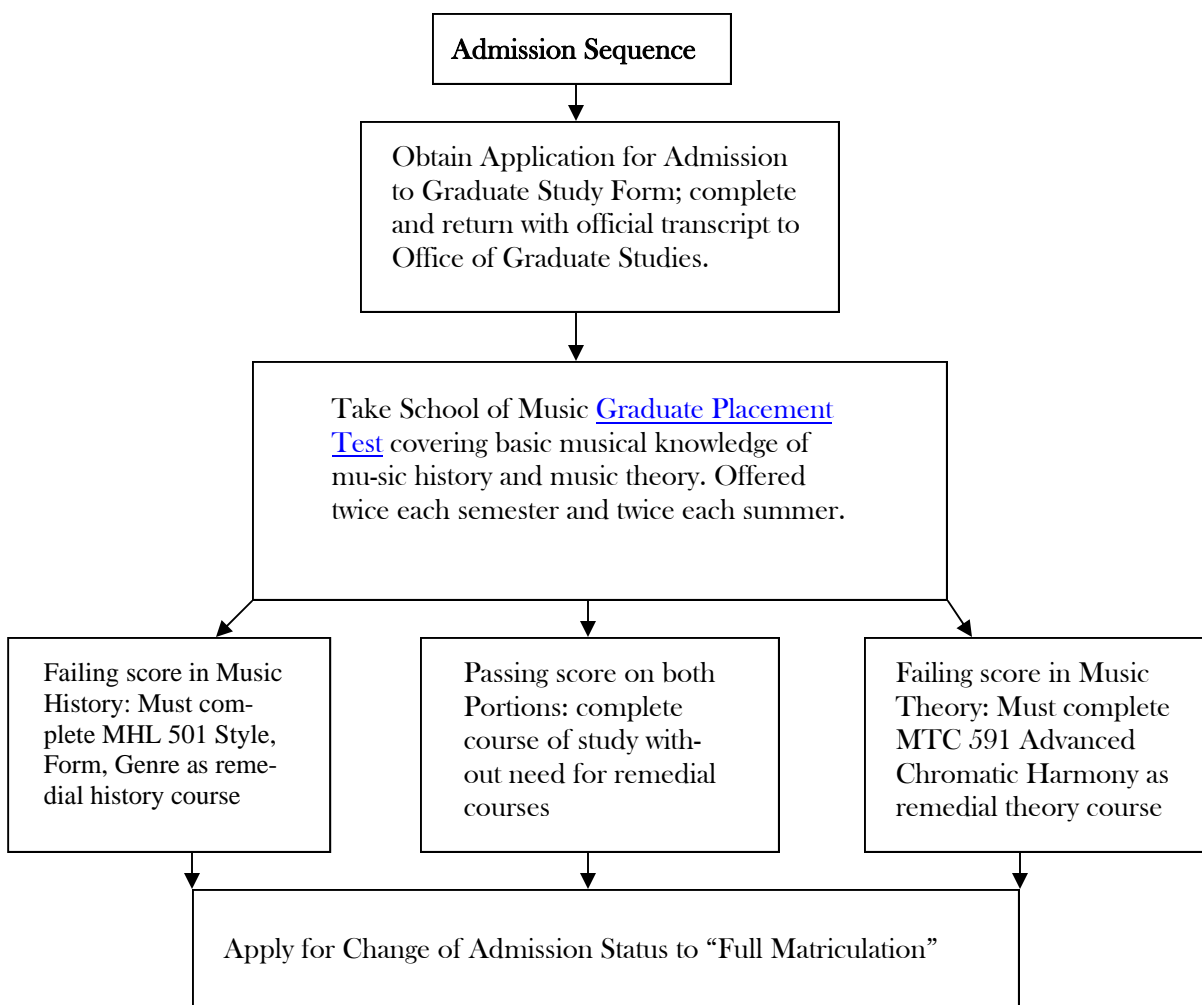
MASTER OF MUSIC IN MUSIC EDUCATION

Orff-Schulwerk Option

34 Semester Hours

The Master of Music in Music Education (Orff-Schulwerk Option) is designed to provide certification in Orff-Schulwerk as recommended by the American Orff-Schulwerk Association. To complete requirements for the degree and AOSA certification requires an eighteen (18) credit hour concentration:

Level I: MUE 570 (2) Basic Musicianship, MUE 571 (1) Recorder, MUE 572 (1) Movement
 Level II: MUE 573 (2) Basic Musicianship, MUE 574 (1) Recorder, MUE 575 (1) Movement
 Level III: MUE 576 (2) Basic Musicianship, MUE 577 (1) Recorder, MUE 578 (1) Movement
 Additional Courses: MUE 579 (1) Recorder Ensemble, MUE 580 (1) Movement, MUE 581 (1) Instrumentarium Practicum, MUE 582 (1) Orff Schulwerk Final Project



MM Orff-Schulwerk Option: page two

Admission to Degree Candidacy

After the successful completion of twelve to fourteen credit hours of graduate course work (in addition to any required remediation), complete and file an “Application for Admission to Candidacy for the Degree” form with the Office of Graduate Studies. Before degree candidacy can be granted, the following conditions must be met:

- Achieve overall GPA of 3.00 and GPA of 3.00 in the music discipline
- Satisfactory completion of any required remediation
- Successful completion of MUE 500 Methods and Materials of Research
- Declaration of a desired research option to the chairperson of the Music Education Department and the Coordinator of Graduate Studies in Music

Procedures for Fulfilling Orff-Schulwerk Requirements
--

Complete Orff-Schulwerk Level I: MUE 570 (2) Basic Musicianship, MUE 571 (1) Recorder, MUE 572 (1) Movement
Complete Orff-Schulwerk Level II: MUE 573 (2) Basic Musicianship, MUE 574 (1) Recorder, MUE 575 (1) Movement
Complete Orff-Schulwerk Level III: MUE 576 (2) Basic Musicianship, MUE 577 (1) Recorder, MUE 578 (1) Movement
Complete additional Orff-Schulwerk courses (Concurrent with or after completion of Level II) MUE 579 (1) Recorder Ensemble, MUE 580 (1) Movement, MUE 581 (1) Instrumentarium Practicum
Complete MUE 582 research project—the development of a music education curriculum exhibiting a knowledge of Orff-Schulwerk materials and teaching/learning sequences and strategies for grades k-8—under the guidance of the professor for MUE 500 and the Orff-Schulwerk specialist. For specific requirements, see Orff-Schulwerk Exit Examination in <i>Appendix</i>

MM Orff-Schulwerk Option: page three

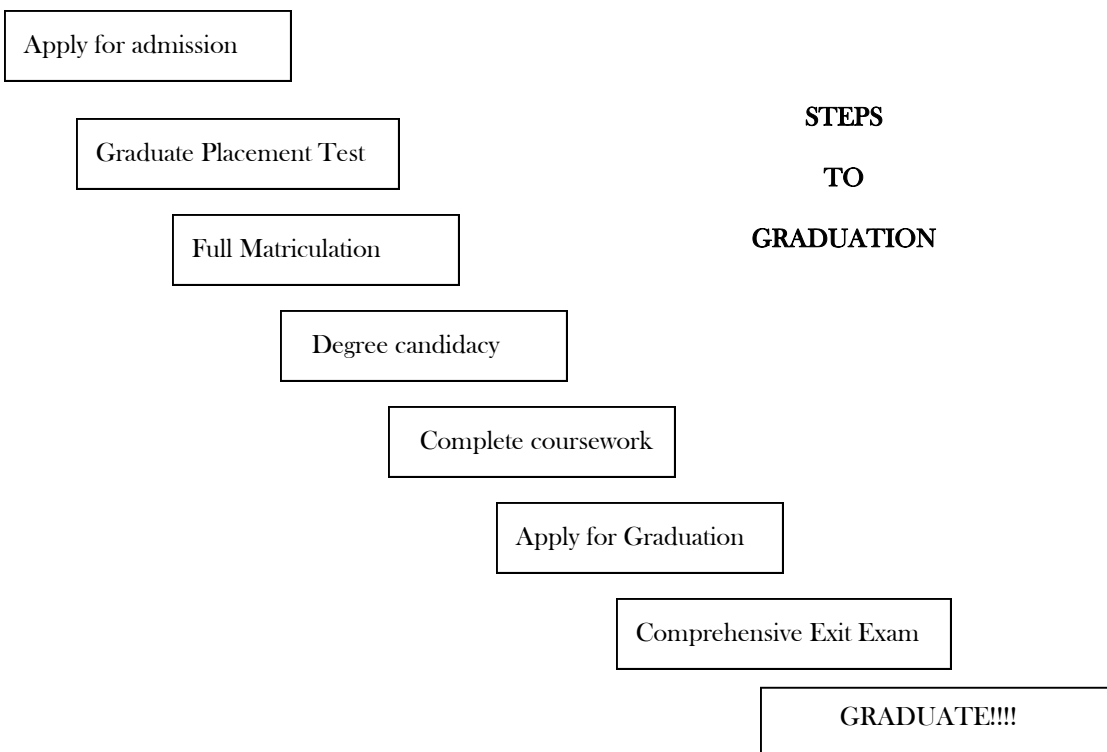
Comprehensive Exit Examination

- The comprehensive exit examination should be taken after all course work and the research report have been completed.
- The student must obtain the Comprehensive Exit Examination document and instructions from the Chairperson of the Music education Department or his/her designee two weeks prior to the University final examination period.
- The document must be received by the Chairperson of the Music Education Department or his/her designee on or before the first Monday of the University final examination period.
- For a sample copy of the Comprehensive Exit Examination, see *Appendix*.

Graduation

During the final semester of study, complete and submit the Intent to Graduate card to the Office of Graduate Studies. Submit appropriate fees as requested by the Office of Graduate Study.

Only after all requirement for the degree of master of Music in Music Education have been fully and completely satisfied will the student be cleared for graduation by the Coordinator of Graduate Studies in Music.



M.M. in Music Education
(Orff Schulwerk Certification: 34 credit hours)

Program of Study

PROGRAM REQUIREMENTS	CREDIT HOURS	Course/Semester taken
Cognate Requirements Music History (MHL)—three credits MUE 500 (3) Methods & Materials of Re-search	6	
Applied Music MUE 579 (1) Recorder Ensemble* MUE 581 (1) Instrumentarium Practicum*	2 —concurrent with or after Level II	
Concentration: Core Courses MUE 503 (3) Philosophical Foundations of Music Education MUE 510 (3) Current Trends in Music Education	6	
Music Theory MUE 570 (2) Level I: Basic Musicianship* MUE 573 (2) Level II: Basic Musicianship*	4	
Orff Schulwerk Required Courses	9	
MUE 571 (1) Level I: Recorder MUE 572 (1) Level I: Movement MUE 574 (1) Level II: Recorder MUE 575 (1) Level II: Movement MUE 576 (2) Level III: Basic Musicianship MUE 577 (1) Level III: Recorder MUE 578 (1) Level III: Movement MUE 580 (1) Movement		
Concentration Electives 3 credits of 500 level course taken under advisement	3 Typically selected from music education, applied music, music history, music theory, or education	
Free Electives	3	
3 credits of any 500 level course(s) selected under advisement	Typically, but not always, selected from Childhood Studies and Reading, Music Education (Kodaly Level I), Physical Education (movement/dance), Special Education	
Comprehensive Exit Exam MUE 582 (1) Orff-Schulwerk Final Project	1	
TOTAL CREDITS	34	

FOUR SUMMER MASTER OF MUSIC EDUCATION ORFF-SCHULWERK CONCENTRATION

Recommended Courses	Credits
SUMMER I	
MUE Core (500, 503, 510)	3
Orff Level I (570, 571, 572)	4
Free or concentration elective	3
SUMMER II	
Cognate selected from Music History offerings	3
MUE Core (500, 503, 510)	3
Free or concentration elective	3
SUMMER III	
MUE Core (MUE 503, 510)	3
Orff Level II (573, 574, 575)	4
Free or concentration elective Or Orff Supplemental Courses (579, 580, 581)	1-3 Or 3
SUMMER IV	
Orff Level III (576, 577, 578)	4
Free or concentration elective Or Orff Supplemental Courses (579, 580, 581)	1-3 Or 3
Comprehensive Exit Exam	0
TOTAL CREDITS	34
1. Any remediation courses required as a result of Graduate Admission Test must be taken the fall and/or spring semesters prior to entering SUMMER I sequence. Upon completion, apply for Change of Admission Status to "Full Matriculation" 2. Cognate courses must be completed by the end of SUMMER II 3. After completion of remediation (if required), MUE 500, and 12-145 credits, apply for Admission to Candidacy for the Degree 4. Submit "Intent to Graduate" card by posted deadline for graduation during Summer IV	